

***Peckhamia soesilae* sp. nov. and *Chirothecia soesilae* sp. nov. from Suriname (Araneae: Salticidae)**

by Dr Dewanand Makhan\*

\*Willem Bilderjohve 19, 3438 PM Nieuwegein, The Netherlands.

Makhan, D. (2006). *Peckhamia soesilae* sp. nov. and *Chirothecia soesilae* sp. nov. from Suriname (Araneae: Salticidae). *Calodema*, 6: 29-33.

**Abstract:** In this paper, two species from the family Salticidae are described from Suriname, *Peckhamia soesilae* sp. nov. and *Chirothecia soesilae* sp. nov.

**Introduction**

The genus *Peckhamia* Simon, 1901, forms a small group with 7 species: *Peckhamia americana* (Peckham & Peckham, 1892) from Mexico and the USA, *P. argentinensis* Galiano, 1996, from Argentina, *P. picata* (Hentz, 1846) from the USA and Canada, *P. prescottii* Chickering, 1946, from Panama and El Salvador, *P. scorpionia* (Hentz, 1846) from the USA and Canada, *P. seminola* Gertisch, 1936, from the USA and *P. variegata* (F. P-Cambridge, 1900) from Panama. The genus *Chirothecia* Taczanowski, 1879, comprises 11 species: *Chirothecia amazonica* Simon, 1901, from Brazil, *C. botucatuensis* Bauab, 1980, from Brazil, *C. clavimana* (Taczanowski, 1871, from Guyana and Brazil, *C. crassipes* Taczanowski, 1879, from Peru, *C. daguerrei* Galiano, 1972, from Argentina, *C. euchira* (Simon, 1901), from Argentina and Brazil, *C. minima* Mello-Leitao, 1943, from Argentina, *C. rosea* (F. P.-Cambridge, 1901) from Panama, *C. semiornata* Simon, 1901, from Brazil, *C. uncata* Soares et Camargo, 1948, from Brazil and *C. wrzesniowskii* Taczanowski, 1879 from Ecuador.

During a collecting-trip to Suriname during 1984, I discovered two new Salticidae. *Chirothecia soesilae* sp. nov. and *Peckhamia soesilae* sp. nov. are the first species of these genera recorded from Suriname. This is the third paper in the series dealing with Salticidae of Suriname, the others being Makhan (2005, 2006).

Holotypes of both species described here are deposited in the University of Suriname, Department of Entomology, Paramaribo, Suriname.

***Peckhamia soesilae* sp. nov. (Figs. 1-3, 7)**

Type: Holotype male. Suriname, district Saramacca, 15.8.1984, coll. D. Makhan (Only the holotype).

Description (holotype male): Total length 2.8 mm. Carapace 1.4 mm long, 0.8 mm wide, brown, anterior margin dark-brown, with brown hairs, posterior lateral side light brown and with white hairs, lateral margin smooth, anterior lateral eyes small, anterior median eyes large, posterior eyes large. Mandible with one tooth. Labium and palpi brown. Abdomen 1.3 mm long, 0.8 mm wide, brown and with brown hairs. Epigynal spinnerets brown. First leg 1.7

mm long, brown, metatarsus with 2 rows of long spines and tibiae with 3 rows of long spines, and with thin brown hairs. Second leg 1.7 mm long, femur dark brown, tibia and patella light brown, lateral side dark brown, metatarsus and tarsus gray. Third leg 1.7 mm long, femur dark brown, patella, tibia, metatarsus and tarsus light brown, the lateral side dark brown. Fourth leg 3.0 mm long, femur and tibiae dark brown, patella, metatarsus and tarsus light brown.

Etymology: This species is named after my wife, Soesila Makhan.

Remarks: This new species is very distinct from the other species of the genus and there is a difference in the shape of the palpal organ.

*Chirothecia soesilae* sp. nov. (Figs. 4-6, 8)

Type: Holotype male. Suriname, Nieuw Amsterdam, 10.8.1984, coll. D. Makhan. (Only the holotype).

Description (holotype male): Total length 3.5 mm. Carapace 1.7 mm long, 1.0 mm wide, brown, margin black-brown, lateral margin smooth, posterior third with a narrow white band of white hairs, from dorsal side to lateral margin. Mandible with two teeth. Anterior median eyes large, anterior lateral eyes small and same size as posterior lateral eyes. Labium and palpi brown. Abdomen 1.6 mm long, 0.8 mm wide, brown, with brown setae. Epigynal spinnerets brown. First leg 2.4 mm long, dark brown, metatarsus with 2 rows of short spines and tibiae with thick brown hairs and with 3 rows of short spines. Second leg 1.8 mm long, brown, tarsus light brown, the lateral side dark brown. Third leg 1.8 mm long, brown, the lateral side dark brown, tarsus light brown. Fourth leg 3.5 mm long, brown, femur dark brown, lateral side dark brown.

Etymology: This species is named after my wife, Soesila Makhan.

Remarks: This new species is very distinct from the other species of the genus and there is a difference in the shape of the palpal organ.

## References

- Bauab Vianna, M.J. (1980). Dues novas especies Brasileiras de *Chirothecia* Taczanowski, 1878 (Araneae, Salticidae). *Revista Bras. Biol.*, 40 (3): 553-556.
- Cambridge, F. P. (1897-1905). *Arachnida. Araneida and Opiliones*. 2. In: *Biologia Centrali-Americana, Zoologia*, 1900: 176 T, 12 F, 7-8.
- Chickering, A.M. (1946). The Salticidae of Panama. *Bull. Mus. Comp. Zool. Harvard*, 97: 415-418, figs. 373-375.
- Galiano, M.E. (1972). Revision del genero "*Chirothecia*" Taczanowski, 1878 (Araneae, Salticidae). *Revista Mus. Argent. Cien. Natur. Entomol. Buenos Aires*, 4 (1): 5-37, 65-77.
- Galiano, M.E. (1986). *Salticidae (Araneae) Formiciformes*. XVI. Especies nuevos o poco concidas de *Simprulla*, *Fluda*, *Descanso* y *Peckhamia*. *Physis C. Buenos Aires*, 44 (107):

137-139; figs. 22-28.

Kraus, O. (1955). Spinnen aus El Salvador. *Abh. Senckenb. Naturforsch. Ges.*, 493: 58, pl. X f. 166-168.

Makhan, D. (2005). Three new *Zygoballus* species from Suriname (Araeneae: Salticidae). *Calodema*, 4: 10-14.

Makhan, D. (2006). *Rishaschia* gen., nov. and new species of Salticidae from Suriname (Araeneae). *Calodema*, 5: 9-18.

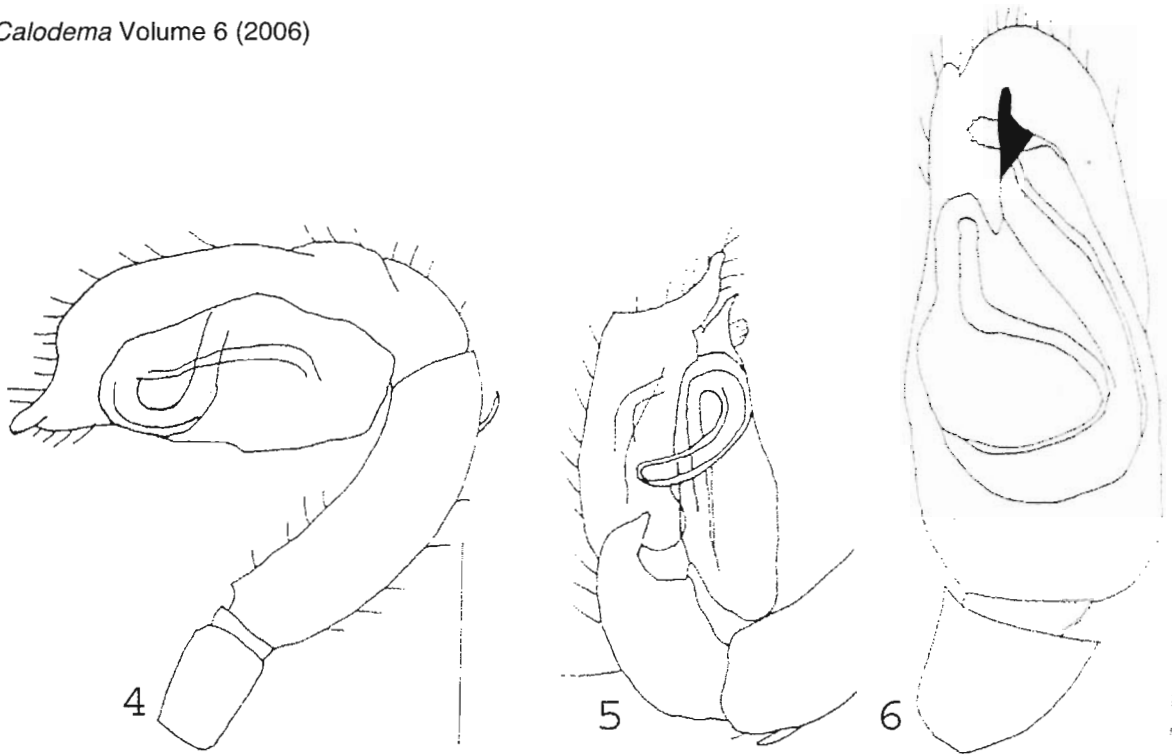
Peckham, G.W., Peckham, E.G. (1909). Revision of the *Attidae* of North America. *Trans. Wisc. Acad. Sci. Arts Let.*, 16 (1): tabs 50, 51, figs 3.

Simon, E. (1901). *Histoire Naturelle des Araignees*. 2(3-4) Paris: 496, 868.

Simon, E. (1903). *Histoire Naturelle des Araignees*. 2(3-4) Paris: 635, figs 747-757.



Figs. 1-3. *Peckhamia soesilae* sp. nov., male right palpal organ, 1 = retrolateral, 2 = prolateral, 3 = dorsal (scale line = 0.25 mm)



Figs. 4-6. *Chirothecia soesilae* sp. nov., male right palpal organ, 4 = retrolateral, 5 = prolateral, 6 = dorsal (scale line = 0.25 mm)



Fig. 7. *Peckhamia soesilae* sp. nov., 7 = male habitus, lateral view (scale line = 0.8 mm)

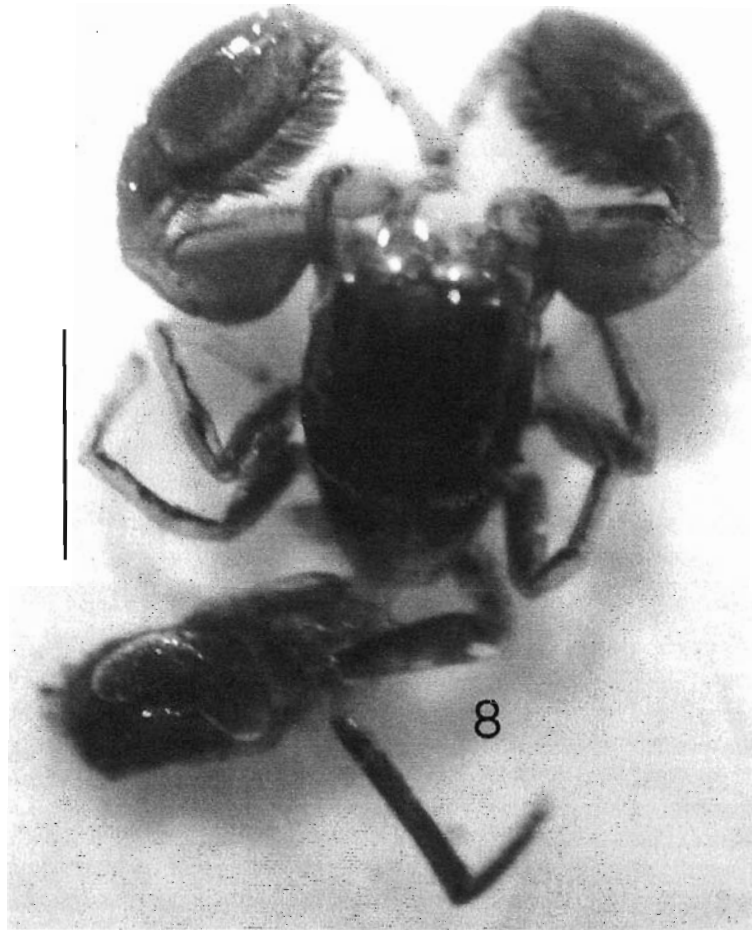


Fig. 8. *Chirothecia soesilae* sp. nov., 8 = male habitus, dorsal view (scale line = 0.9 mm)